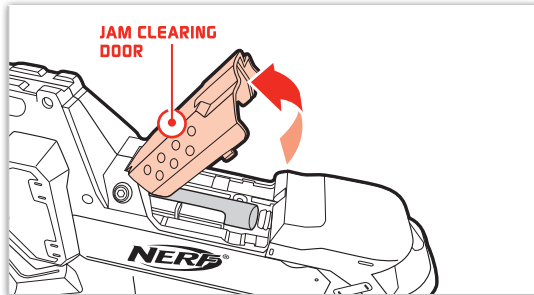


## CLEARING A JAM



If blaster appears jammed:

Open JAM CLEARING DOOR and remove any jammed darts. Close door.

**NOTE:** Blaster will not function unless JAM CLEARING DOOR is fully closed.

## IMPORTANT: BATTERY INFORMATION

### ⚠ CAUTION:

1. Always follow the instructions carefully. Use only batteries specified and be sure to insert them correctly by matching the + and - polarity markings.
2. Do not mix old batteries and new batteries or standard (carbon-zinc) with alkaline batteries.
3. Remove exhausted or dead batteries from the product.
4. Remove batteries if product is not to be played with for a long time.
5. Do not short-circuit the supply terminals.
6. Should this product cause, or be affected by, local electrical interference, move it away from other electrical equipment. Reset (switching off and back on again or removing and re-inserting batteries) if necessary.
7. **RECHARGEABLE BATTERIES:** Do not mix these with any other types of batteries. Always remove from the product before recharging. Recharge batteries under adult supervision. **DO NOT RECHARGE OTHER TYPES OF BATTERIES.**

Product and colors may vary.

YouTube and the YouTube logo are trademarks of Google Inc.

©\* and/or TM\* & © 2011 Hasbro. All Rights Reserved. TM & © denote U.S. Trademarks. Patents Pending.

340690000

PN 7206030000

### Hey NERF Nation!

Join us online and keep up with the latest and greatest news from NERF!



Ask a parent before going online.

Questions? Call 1-800-327-8264

# NERF

### ⚠ CAUTION:

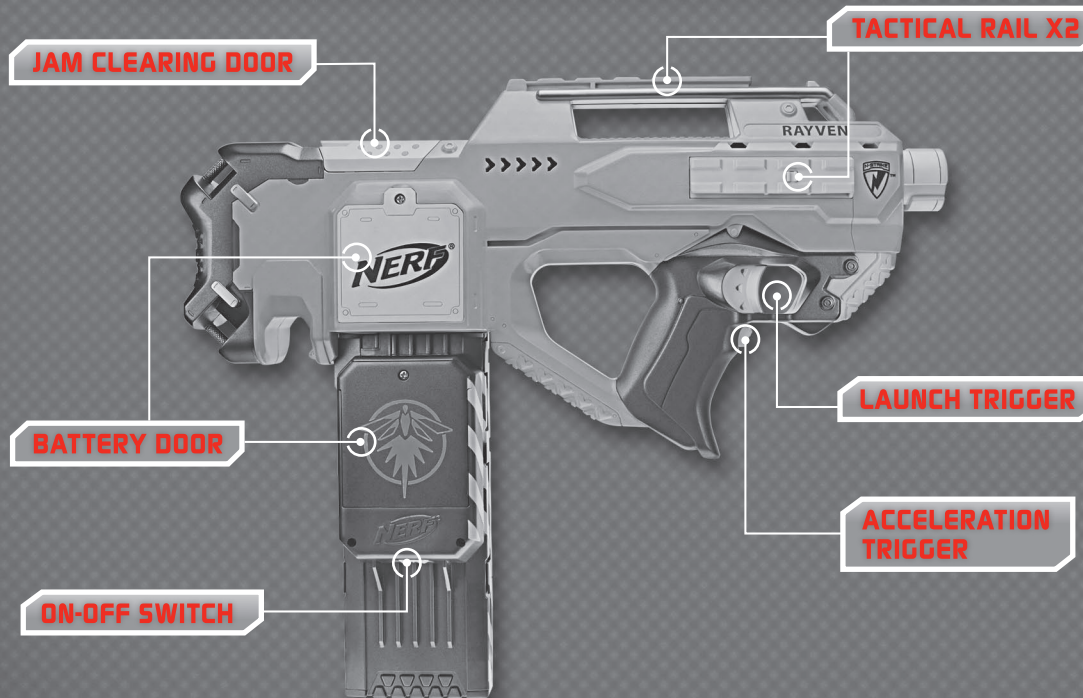
Do not aim at eyes or face. TO AVOID INJURY: Use only darts designed for this product. Do not modify darts or dart blaster.

AGES 8+



## RAYVEN CS-18™\*

Be sure to read and follow all instructions carefully before using this product.



### Blaster:

**x4** ALKALINE BATTERIES REQUIRED  
1.5V AA or LR6 size NOT INCLUDED

Phillips/cross head screwdriver (not included) needed to insert batteries.

### Clip:

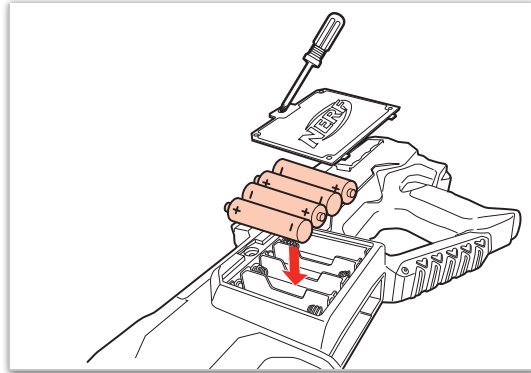
**x3** 1.5V AA or R6 size BATTERIES REQUIRED  
NOT INCLUDED

Alkaline batteries recommended. Phillips/cross head screwdriver (not included) needed to insert batteries.

**NOTE:** JAM CLEARING DOOR must be fully closed for blaster to fire.

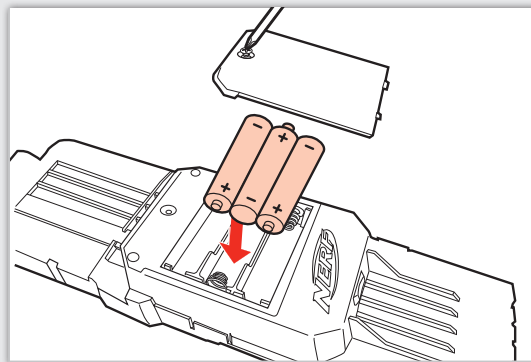


## TO INSERT BATTERIES IN BLASTER



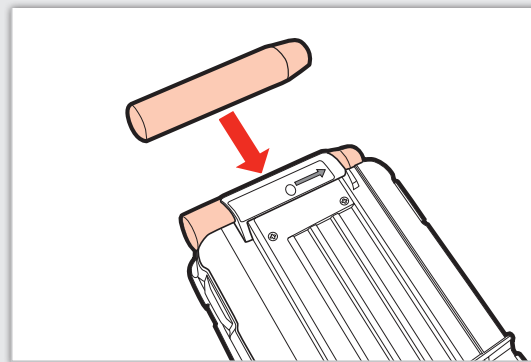
- 1 Loosen screw in battery compartment door with a Phillips/cross head screwdriver (not included).
- 2 Remove battery door. Insert 4 x 1.5V "AA" or LR6 alkaline batteries.
- 3 Replace battery door and tighten screw.

## TO INSERT BATTERIES IN CLIP



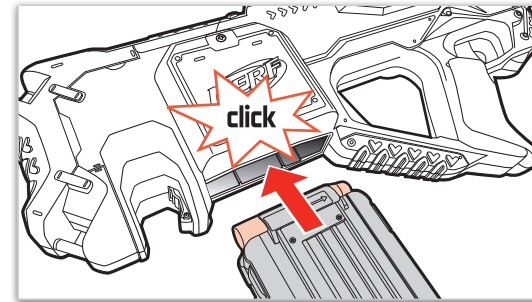
- 1 Loosen screw in battery compartment door with a Phillips/cross head screwdriver (not included).
- 2 Remove battery door. Insert 3 x 1.5V "AA" or R6 size batteries. Alkaline batteries recommended.
- 3 Replace battery door and tighten screw.

## LOADING AMMO



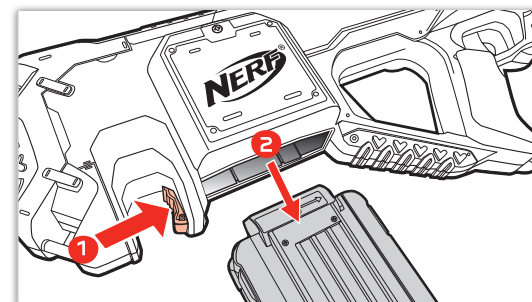
- Load DARTS into QUICK-RELOAD CLIP.
- Be sure DARTS are inserted in direction indicated on CLIP.
  - Insert 1 CLIP SYSTEM DART at a time and push down.
  - CLIP can hold up to 18 CLIP SYSTEM DARTS.

## INSERTING CLIP



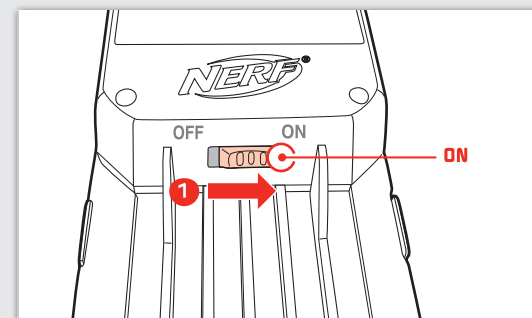
Insert CLIP into BLASTER.  
(Make sure arrow on CLIP points toward the barrel of the BLASTER.)

## RELOADING

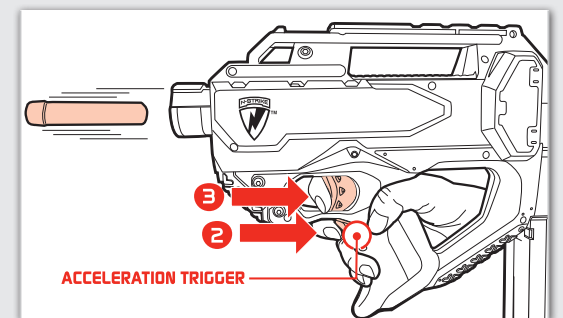


- 1 Press CLIP RELEASE BUTTON to remove CLIP.
- 2 Repeat steps for loading ammo.

## FIRING



- 1 Slide switch to "ON" position to charge glow darts.



- 2 Press and hold the ACCELERATION TRIGGER to turn the accelerator motor on.
- 3 While holding the ACCELERATION TRIGGER, pull the LAUNCH TRIGGER to fire. One DART will fire per pull of the LAUNCH TRIGGER.

**NOTE:** JAM CLEARING DOOR must be fully closed for blaster to fire.